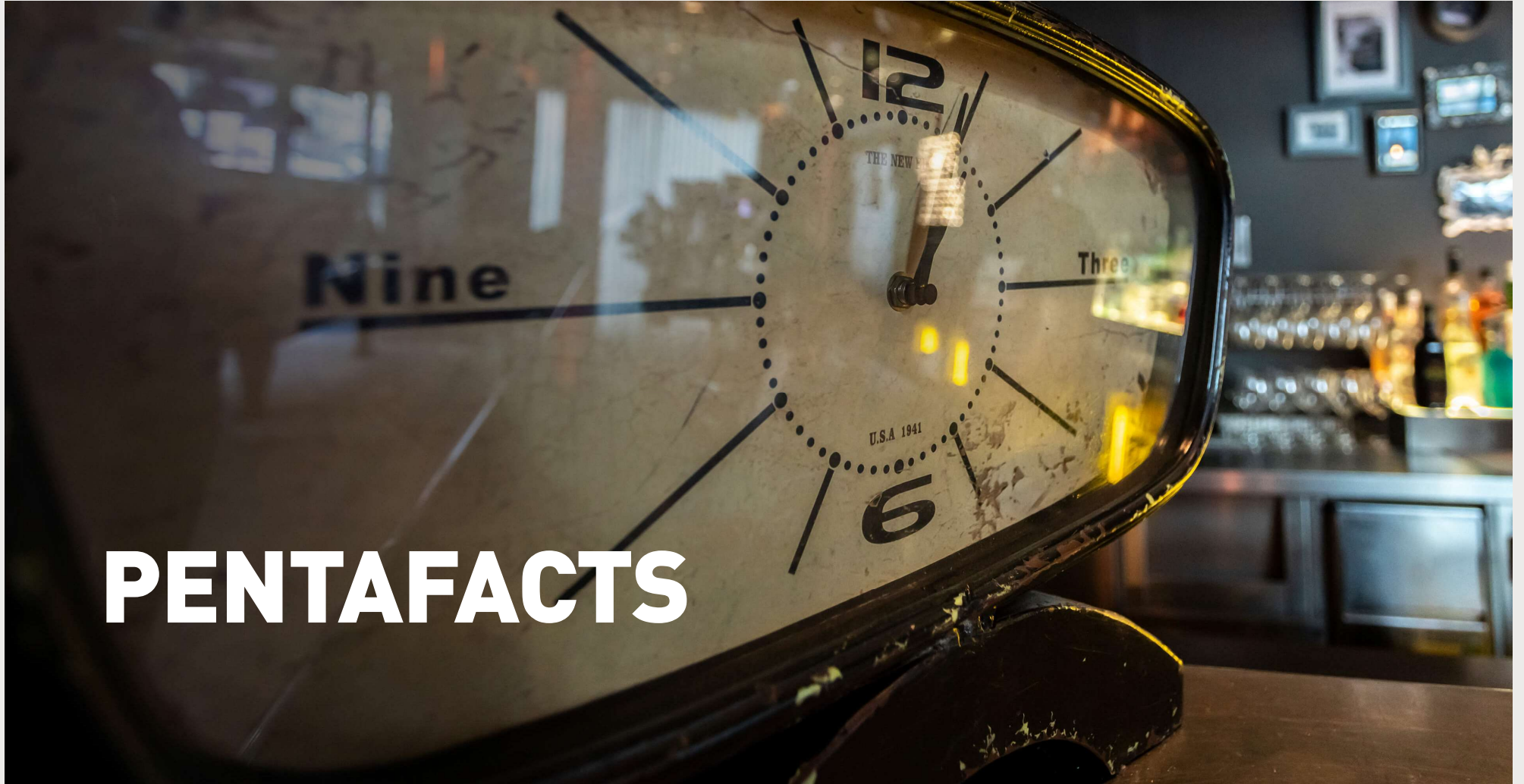


**PENTA
HOTELS**

**PENTAHOTEL LIEGE
CITY CENTRE**

Your neighbourhood lifestyle hotel



PENTAFACTS

PENTAHOTELS



Belgium

Brussels City Centre
Brussels Airport
Leuven
Liège



France

Paris CDG



Germany

Berlin
Braunschweig
Chemnitz
Eisenach
Gera
Kassel
Leipzig
Rostock
Wiesbaden



Rest of EU

Prague
Moscow
Vienna



United Kingdom

Birmingham
Derby
Ipswich
Reading
Warrington
Inverness



Asia

Beijing
Hong Kong, Kowloon
Hong Kong, Tuen Mun
Shanghai
Chengdu



65.000+
burgers per
year



1.400.000
overnight stays



1.500+
staff from 32 different nations

**Welcome to our
24/7 Pentalounge**

Enjoy our all-in-one lounge,
café, bar and reception



Playstation & Pool table
use the latest hardware

Pentahotel Liège

105 rooms | 2 meeting rooms | best group size up to 50 guests

THE NEIGHBOURHOOD



City centre: **0,1 km**



Airport: **100 km (BRU)**



Train station: **2 km**



Convention centre: **2 km**



[Google Maps](#)

DID YOU KNOW?

- 2 meeting rooms on the ground floor
- Only 5 min to Guillemins Train Station, 5 min to congress place and 1 min walk to “the squarre” shopping street
- Pentalounge with billiard and PS4



[Hotel Homepage](#)



GALLERY



PENTAHOTELS

PENTALOUNGE BAR



**Who needs a
receptionist for
check ins?**

PENTALOUNGE BILLIARD



**A popular spot
to socialize,
play games or
listen to the
latest tunes**

PENTALOUNGE RESTAURANT



**Cheers to
pentalicious
where culture
meet food**

PENTALOUNGE BREAKFAST



**The best way to
start a nice day!**

PENTAHOTELS

PENTAROOM 3 DIFFERENT COMFORT

**Far from standard
Your room is your
castle and we'll
treat you royally**



PENTAGYM. SPORTS

**Work, play,
compete
a penta philosophy :
add relaxation to
work...**



PENTAHOTELS

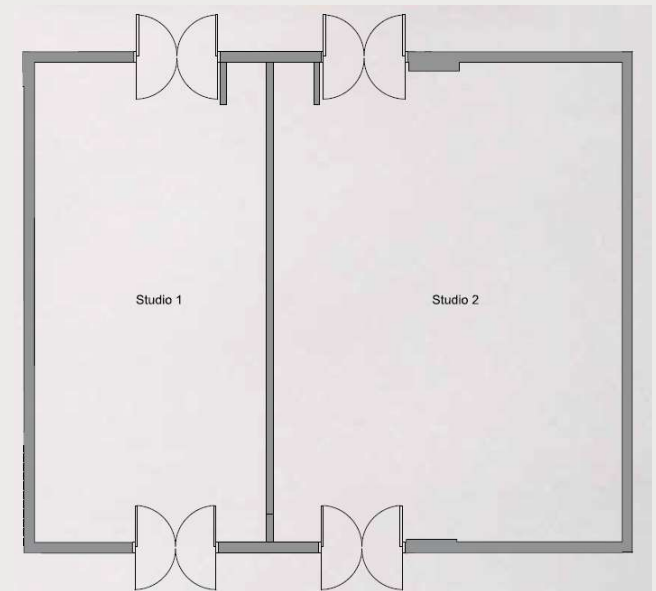


MEETING AND EVENTS

PENTAHOTELS

MEETINGS & EVENTS. CAPACITIES

Salon	Size	Surface area	Height	Bloc school	TheaterU	Tarif TTC
Studio 1	10,0 x 5,0	50 m ²	2,85	12 12	35 8	€ 500
Studio 2	10,0 x 7,0	70 m ²	2,85	20 20	60 16	€ 700
Studio 1+2	10,0 x 12,0	120 m ²	2,85	30 60	80 40	€ 1200



A function room adapted to the number of participants and fitted with:
 Large screen, LCD – Projector*, paperboard, markers*, notepads*, pens*, WiFi (free) or high speed access (additional), water*.

* Included in the meeting package.

Let's get down to business

Pentahotel Liège, 100 Bld de la Sauvenière 4000 Liège. Tel: 04/221.77.11- Fax: 04/221.77.01- @: sales.liege@pentahotels.com

"All-in" work days

Choose a theme for each break ...

1. Nutritional break: coffee, tea, fruit juice, smoothie and fresh fruit and ganola or muesli
2. Original Break: coffee, tea, fruit juice and healthy tapas (hummus, grisini, vegetables,...)
3. Break all sweet: coffee, tea, fruit juice and 2 sweet accompaniments

PENTA DAY DELEGATE RATE AS OF 44.00 €** including:

- Main meeting room rental (as well as the set-up and the basic equipment (conference kit, flipchart, notepads and pens,).
- Unlimited mineral water in the meeting room
- The morning coffee break (choice between original, nutritional or all in sweet).
- A quick lunch (choice between a 2 course menu (penta meal) or sandwich buffet or pentacheeseburger*/ cesar salad*/ veggie-burger* (*, selection inbetween these 3* dishes can be made in the morning of the meeting day by the participants)
- Water, juice and coffee.
- The afternoon coffee break (choice between original, nutritional or all in sweet)

PENTA PLUS DAY DELEGATE RATE AS OF 54.00 €** including:

- Main meeting room rental (as well as the set-up and the technical equipment (screen, beamer, conference kit, flipchart, notepads and pens,).
- Mineral water and soft drinks in the meeting room.
- The morning coffee break (choice between original, nutritional or all in sweet).
- A quick lunch (choice between a 3 course menu (penta meal) or sandwich buffet (accompanied by a soup, salads and 2 desserts) or pentacheeseburger*/ cesar salad*/ veggie-burger* (*, selection between these 3* dishes can be made in the morning of the meeting day by the participants)
- Water, soft drinks, juice and coffee.
- The afternoon coffee break (choice between original, nutritional or all in sweet).



** The prices listed are subject to availability, and may vary depending on the time of year and number of bookings. Rates are applicable to a minimum of 10 persons. All prices listed include VAT.

PENTAHOTELS

"A la carte" meetings

Rental Material:

Rental of LCD Projector 8 h	€ 99.00
Laser pointer	€ 9.00
Note pads and pens per person	€ 4.00
Conference Kit	€ 19.00
Lectern	€ 19.00
Other items on request	

WIFI HS INCLUDED

Meeting room rental:

Rental of main meeting room	from € 10.00/m2
Rental of break out rooms	from € 5.00/m2

DRINK PACKAGES:

Drink Package 1 glass	€ 10.00
1 Drink (house wine, beer, soft), water and coffee	
Drink Package 2 Glasses	€ 15.00
2 Drinks (house wine, beer, soft) water and coffee	
Aperitifs Package	€ 7.00
Choice of 1 glass (Prosecco, kir, fruit juice)	
Mineral water (1 l)	€ 8.00

Coffee Breaks:

Welcome Coffee	€ 7.00
(coffee, tea, fruit juice and pastries)	
Coffee break of your choice	€ 7.00
Thermos of coffee / tea	€ 10.50

LUNCH / DINNER:

3 course menu « pentaPlus » € 39.00
A starter, a main dish and a dessert ("pentaPlus" menu)

4 course menu « pentaPlus » € 49.00
A starter, a main dish, a cheese plate and a dessert ("pentaPlus" menu)

Buffet /BAR € 27.00
Sandwich-BAR + soup, salad bar and 2 deserts

Snack buffet pentaPlus € 37.00
soup, 2-3 vegetables, 3-4 salads, starters, main courses (1 vegetarian dish), desserts, cheese

2 course menu « PENTA » € 24.00
A starter & a main dish, or a main dish & a dessert ("penta" menu)

3 course menu « PENTA » € 28.00
A starter, a main dish and a dessert ("penta" menu)

Other menus are on request

“evening” meetings

120m2 room with a "theatre" party for the meeting and a party with stand-up for the catering + lobby for coffee

Sandwich + dessert Package and beverage package:

Meals in the form of elaborate sandwiches (3/person)

Open bar: Soft, beer and wine

Meeting room in theater for 50 people

After the meeting: choice of Desserts (2 per person) in the room on mange-stand

Coffee, tea, fruit juice

All Inclusive Package: €39 per person. (1 * open bar)

Buffet Evening Package + dessert and Beverage package:

Meal in the form of "finger food" buffet hot and cold in the Pentalounge (min. 25 people, below burger + dessert)

Italian burger 150gr, onion ring, small fried chicken, finger

mozzarella, pizza Party, sandwich with polar bread (salmon, Parma ham....), tomato mozzarella skewer

2 glasses of wine or beers or softs, water and coffee

Meeting room in theater for 50 people

After the meeting: choice of Desserts (2 per person) in the room on high tables.

Coffee, tea, fruit juice

All Inclusive Package: €45 per person. (1 * open bar)

Evening package fingers + sandwiches and beverage package

Onion rings, nachos and small fried chicken on high tables

Open bar: Soft, beer and wine

Theatre Room for 50 people

Buffet Sandwiches and desserts, open bar + Cafe

All Inclusive Package: €54 per person. (2 * open bar)

Evening package verrines + dessert and drink package:

meal in the form of verrines (please choose 5 savory)

Smoked salmon in Japanese style on Blini with poppy seeds

Black olives tapenade, Grilled focaccia bread

Duck mousse with spices, onion chutney with raspberry

Salmon duo rillettes, cherry tomatoes with chopped herbs

Blue cheese mousse and tartare of marinated peppers

Serrano ham, black olives, crushed tomato, arugula and parmesan cheese

Mini tomato-mozzarella salad, olive oil and pesto

Quinoa with tuna and pink radishes

Quinoa avocado-grapefruit

Scallop tartare on its green cream (pea cream with sweet mint) (+ 1 €)

Crab-crayfish mango-passion cocktail (cream, mascarpone, coriander, pink berries and lime (+ 1 €))

Gazpacho with fresh goat cheese

Fillet of herring, beetroot, green apple, young onions and condiments

Mini frisée with smoked bacon, wine vinegar and quail egg

Atlantic salmon tartare in duo

Scampi lime and ginger, served with arugula and dill (+ 1 €)

Beef tartare with Italian knife (parmesan, arugula, truffle oil, bread, balsamic) (+ 1 €)

Caviar of tomatoes confit and grissini

Beans with marinated tomatoes and parmesan cheese

Mousse of duck foie gras and onion confit (+ 1 €)

Smoked salmon marinated with chives, creamy dill and trout eggs

Marinade of peppers with pesto and fresh goat cheese

Guacamole, fillet of cod with herbs (+ 1 €)

Tomato marinade with shrimp bouquet

2 glasses of wine or beer or soft drinks, water and coffee

theater meeting room for 50 people

after the meeting: choice of desserts (2 per person) in the dining room

Coffee, tea, fruit juice

All inclusive package: 45 € per person. (1 * open bar)

EATING
@ PENTAHOTEL



Menu

« PENTA »

Starters

Vegetable cream soup of the day

Crispy salad with warm goat cheese,
smoked bacon and Granny Smith

Cheese croquettes, salad mesclun,
parmesan shavings and balsamic cream *

Hummus with chickpeas, cashews, and
grisini */**

Salmon gravelax with pink pepper and dyle
sauce, blinis breads

Main Dish

Salmon pancake with "witloofs", shrimp duo and
saffron emulsion with dill

The traditional "Liégeoise" meatballs, Jupille
beer and Liège syrup with fries

Beef Burger or Vegan Burger */** With fries
and salad

Rumsteak of lamb with thyme and honey,
bouquet of vegetables and gratin Dauphinois

Vegan and gluten-free bowl: brown rice,
avocado, cucumber, radishes, onions,
coriander,...*/**

Desert

Pineapple cooked in a spicy rum syrup,
served with coconut sorbet */**

French toast with salted caramel butter,
custard and vanilla ice cream "bourbon"

Homemade traditional café "Liégeois" *

Chocolate entremets and red fruit coulis
*

Chef's Pana cotta *

*Vegetarian dishes

**Vegan dishes

Our offers are made according to seasonal products and for minimum 10 people.

We offer a selection of our different dishes, subject to modifications according to the seasonal products of the market.

Please make a unique choice for all guests.

The number of participants must be communicated to us in writing at least 5 days before the event.

PENTAHOTELS

**EATING
@ PENTAHOTEL**



Menu « PENTA + »

Starter

Warm scampi Lettuce salad with exotic flavors, served with lime & ginger butter dressing

Beef carpaccio with white truffle oil, served with rocket salad & shredded parmesan

Small gourmet salad of smoked duck breast with "foie gras", hazelnut and sherry vinaigrette dressing

Fillet of red mullet with extra-virgin olive oil, seared fennel with dried tomatoes and white butter

Tofu skewer, sweet&sour sauce and steamed vegetables*/**

Main course

Back of pikeperch cooked on scallop skin, velvety peas and mashed potatoes with basil

Homemade beef tagliatta

Medallion of sole with two salmon, creamy cake and ravioli with vegetables of the sun

"Nossibé" style duckling, strawberries and green pepper (in season), asparagus ballots and granule

Risotto with seasonal vegetables */**

Desert

Red fruit soup with Sichuan pepper, vanilla ice cream and almond biscuits*

Pineapple cooked in spicy syrup and flambéed in rum, served with coconut sorbet */**

Chocolate marquise with candied orange peel*

Cheesecake, seasonal fruit coulis*

Cheese platter from "Pays de Herve" with Liège syrup (supplement of 2 €)*

*Vegetarian dishes

**Vegan dishes

Our offers are made according to seasonal products and for minimum 10 people.

We offer a selection of our different dishes, subject to modifications according to the seasonal products of the market.

Please make a unique choice for all guests.

The number of participants must be communicated to us in writing at least 5 days before the event.

PENTAHOTELS

MEETINGS & EVENTS



**Life is too short
for boring
meetings**

PENTAHOTELS

To reach us:

pentahotel LIEGE

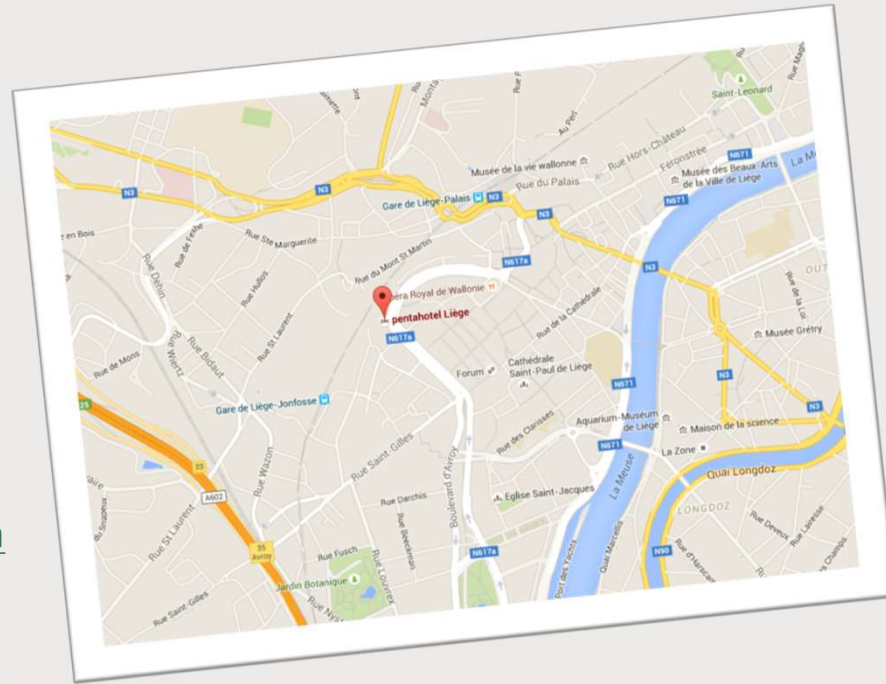
100 bld de la Sauvenière

4000 Liège

T : +32 (0)4 221 77 20

F : +32 (0)4 221 77 01

@ : sales.liege@pentahotels.com



Brussels-Gent-Antwerp-Bruges: E40 / A3 direction Liège. A602 exit « Liège Avroy » - N607 Direction « Centre » then « Palais des Congrès », then follow direction « Centre » again.

Luxembourg – Les Ardennes : E25 / A26 direction Liège exit « Grivegnée » - N30 direction « Centre » then « Palais des Congrès », then follow direction « Centre » again.

Germany – Aachen – Maastricht : E40 / A3 – follow E25 Luxembourg – N90 direction « Huy » - direction « Palais des Congrès », then follow direction « Centre » again.

Paris – Charleroi – Namur : E42 / A15 : Follow A602 direction « Liège » exit « Liège Avroy » - N607 direction « Centre » then « Palais des Congrès », then follow direction « Centre » again.

PENTACTIVITIES. AROUND YOUR HOTEL

- **The Boverie Museum:**

La Boverie houses the collections of the Museum of Fine Arts of Liège and a brand new space to host temporary exhibitions multiple facets, which represent each time a unique experience for the visitor. The park surrounding the museum is very pleasant. Also consider using the river shuttle



- **La maison du Peket:**

This is a place that deserves more than one detour and many halts to the rhythm the sympathetic local beverage declined in about thirty fruity fragrances.



- **La Batte:**

The Batte market, commonly called the Bat by the Liégeois, is a Sunday market, international market-situated along the left bank of the Meuse in Liège, Belgium. Dating from 1561, it is the oldest market and, with its 4 to 5 million visitors annually, one of the most important in Europe.



**We're guessing you're coming
to see more
than just our fabulous hotel**

- **La gare des Guillemins :**

A new station, designed by the architect Spanish Santiago Calatrava Valls, has been inaugurated on 18 September 2009 after a ten years of work. Its aesthetics is generally considered a success, the train station attracts many tourists and visitors to Liège is today an emblem of the city and the monument of Liège

- **La brasserie Curtius:**

Taste your beer otherwise. Brasserie C welcomes you warmly.

These indications are for informational purposes only.
As the pentahotel of Liège is not linked to any of the companies mentioned

PENTAHOTELS

Teambuilding activity ideas in Liège...

- Escape room: GET OUT
<http://getoutliege.be/fr/>
- FLY IN
<http://fly-in.be/>
- blind test ou Quizz ? Clam'Art
Axelle Clamart 0497/743.005
axelle.clamart@gmail.com
 - The good time company
<http://www.thegoodtimecompany.com>
 - Goolfy (The Square)
info@thesquareliege.be
<https://www.thesquareliege.be/>
 - Bowling
<http://www.bowlingcarredas.com/>
 - Brasserie C Visite
<http://brasseriec.com/>
- One Reality (virtual reality free rooming)
<https://one-reality.be/>
- Team building & évènement
WE VENTURES
Téléphone: [+32 \(0\) 80 80 00 98](tel:+322080800098)
Email: info@weventures.be
<https://fr.weventures.be/>
- Team building & évènement
CINEREA Benelux
Téléphone: [+32 483 40 34 26](tel:+32483403426)
Email: vanessa.jarlot@cinerea.be
<https://cinerea.events/>
- Magician's Company
www.in-the-air.be
clement@in-the-air.be
0032 474 32 51 69
- Blegny Mine Visite
<https://www.blegnymine.be/>
- Fort Aventure
<http://fortaventureevents.be/>
- Histoire de la préhistoire
<https://www.prehisto.museum/>

These indications are for informational purposes only.
As the pentahotel of Liège is not linked to any of the companies mentioned

WHAT ARE YOU WAITING FOR ?

PENTA
HOTELS

FOR ANY REQUEST



Your dedicated Penta contact



+32 4 221 77 20

+32 4 221 77 30



Individual or Groups: reservations.liege@pentahotels.com

Meetings and Events : sales.liege@pentahotels.com



PENTAHOTEL LIEGE

Bld de la Sauvenière 100, 4000 Liège

T :+32 (0)42217711

@ :info.liege@pentahotels.com